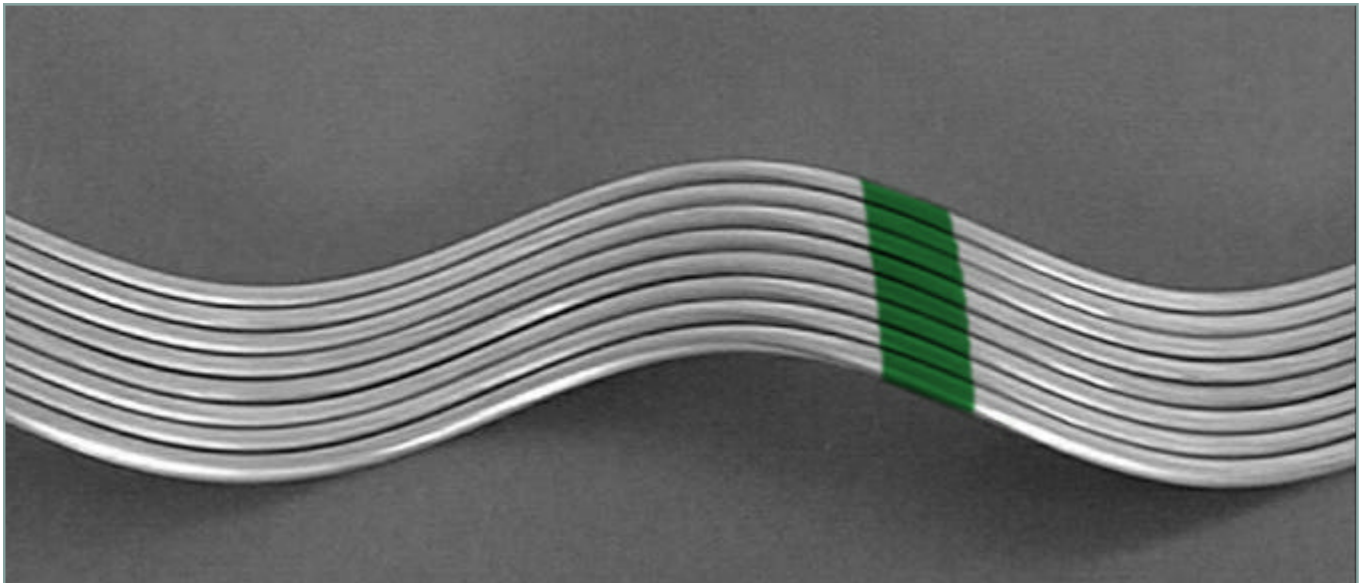


LINE GUARDS

Series 20000



GENERAL DESCRIPTION

Line Guards are designed to protect conductors by reducing bending, compression and abrasive action to a minimum. Line Guards are recommended as the minimum conductor protection for spans of less than 300 ft. (91 m).

PERFORMANCE

When no more than 25% of the outside strands of an ACSR or Aluminum Conductor have been damaged, thereby restoring 100% of rated conductance and strength.

Do not use Line Guards for repair at the support point.

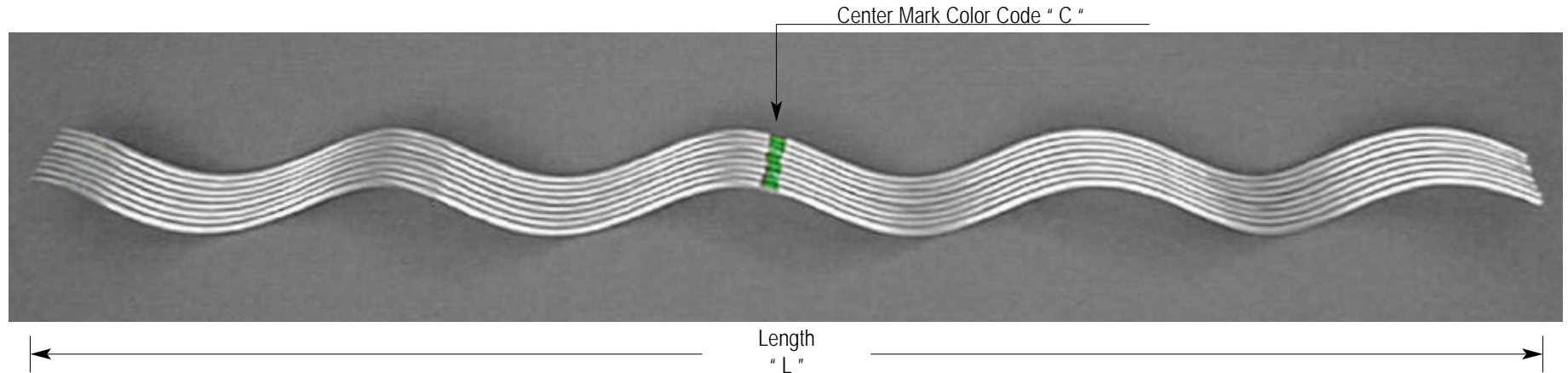
Line Guards may be tapped over; however, the use of an inhibitor is recommended.

Line Guards are available in two lengths for each conductor type: one for single support and one for double support, if distance between the supports is 12 inches (30 cm) or less. Armor Rods are designed to protect conductors by reducing bending, compression, and abrasion at the support point, particularly where handties are used. Protection against flashover damage is also provided. Armor Rods are recommended as the minimum conductor protection for spans of 300-ft. (91m) or more.

ALUMINUM LINE GUARDS



Designed for use on: ACSR, All-Aluminum, Aluminum Alloy,
Compacted ACSR, Compacted All-Aluminum, AWAC



Catalog Number	Diameter Range (inches)		Conductor Construction A W G - M C M					Wire		Properties		Packaging per box	
	Min	Max	ACSR Type	All Aluminum Type	Aluminum Alloy Type	Compacted ACSR Type	Compacted All-Aluminum Type	Diam (inches)	Qty per set	Color " C "	Length (inches) " L "	Units	Weight (Lbs)
21000	0.182	0.193	#6,6/1	7w				0.1	7	PURPLE	17	100	12
21001	0.182	0.193	#6,6/1	7w				0.1	7	PURPLE	29	100	20
21010	0.194	0.207	#6,6/1		#6,7W			0.121	7	BLUE	17	100	12
21011	0.194	0.207	#6,6/1		#6,7W			0.121	7	BLUE	29	100	20
21020	0.208	0.219					#4,7W	0.121	7	BLACK	17	100	12
21021	0.208	0.219					#4,7W	0.121	7	BLACK	29	100	20
21030	0.22	0.228	#5,6/1		#5,3-7W			0.121	7	WHITE	19	100	16
21031	0.22	0.228	#5,6/1		#5,3-7W			0.121	7	WHITE	31	100	26
21040	0.229	0.243	#4,6/1	#4,7W		#4,7/1		0.121	8	BROWN	19	100	20

ALUMINUM LINE GUARDS

Catalog Number	Diameter Range (inches)		Conductor Construction A W G - M C M					Wire		Properties		Packaging per box	
	Min	Max	ACSR	All Aluminum	Aluminum Alloy	Compacted ACSR	Compacted All-Aluminum	Diam (inches)	Qty per set	Color " C "	Length (inches) " L "	Units	Weight (Lbs)
			Type	Type	Type	Type	Type						
21041	0.229	0.243	#4,6/1	#4,7W		#4,7/1		0.121	8	BROWN	31	100	33
21050	0.244	0.259	#4,6/1		#4,7W			0.121	8	ORANGE	19	100	20
21051	0.244	0.259	#4,6/1		#4,7W			0.121	8	ORANGE	31	100	33
21060	0.26	0.273		#3,7W			#2,7W	0.121	8	GREEN	19	100	20
21061	0.26	0.273		#3,7W			#2,7W	0.121	8	GREEN	31	100	33
21070	0.274	0.289			#3,7W			0.121	9	YELLOW	21	100	25
21071	0.274	0.289			#3,7W			0.121	9	YELLOW	33	100	39
21080	0.29	0.308		#2,7W		#2,6/1		0.121	9	PURPLE	21	100	25
21081	0.29	0.308		#2,7W		#2,6/1		0.121	9	PURPLE	33	100	39
21090	0.309	0.326	#2,6/1,7/1		#2,7W			0.121	9	RED	21	100	25
21091	0.309	0.326	#2,6/1,7/1		#2,7W			0.121	9	RED	33	100	39
21100	0.327	0.346		#1,7W			#1,7W-19W	0.121	10	BLUE	21	100	28
21101	0.327	0.346		#1,7W			#1,7W-19W	0.121	10	BLUE	33	100	44
21110	0.347	0.366	#1,6/1		#1,7W			0.121	10	GREEN	23	100	30
21111	0.347	0.366	#1,6/1		#1,7W			0.121	10	GREEN	35	100	46
21120	0.367	0.389		1/0,7W			2/0,7W	0.121	11	BLACK	23	100	32
21121	0.367	0.389		1/0,7W			2/0,7W	0.121	11	BLACK	35	100	49
21130	0.39	0.413	1/0,6/1		1/0,7W			0.121	11	YELLOW	25	100	35
21131	0.39	0.413	1/0,6/1		1/0,7W			0.121	11	YELLOW	37	100	52
21140	0.414	0.436		2/0,7W-19W			3/0,7W	0.121	12	BROWN	25	50	20
21141	0.414	0.436		2/0,7W-19W			3/0,7W	0.121	12	BROWN	37	50	30

ALUMINUM LINE GUARDS

Catalog Number	Diameter Range (inches)		Conductor Construction A W G - M C M					Wire		Properties		Packaging per box	
	Min	Max	ACSR	All Aluminum	Aluminum Alloy	Compacted ACSR	Compacted All-Aluminum	Diam (inches)	Qty per set	Color " C "	Length (inches) " L "	Units	Weight (Lbs)
			Type	Type	Type	Type	Type						
21150	0.437	0.463	2/0,6/1		2/0,7W	3/0,6/1		0.121	13	BLUE	27	50	23
21151	0.437	0.463	2/0,6/1		2/0,7W	3/0,6/1		0.121	13	BLUE	39	50	33
21160	0.464	0.49		3/0,7W,19W				0.121	13	GREEN	27	50	24
21161	0.464	0.49		3/0,7W,19W				0.121	13	GREEN	39	50	35
21170	0.491	0.521	3/0,6/1			4/0,6/1		0.121	14	ORANGE	29	50	26
21171	0.491	0.521	3/0,6/1			4/0,6/1		0.121	14	ORANGE	41	50	37
21180	0.522	0.551		4/0,7W-19W				0.121	14	BLACK	29	50	26
21181	0.522	0.551		4/0,7W-19W				0.121	14	BLACK	41	50	37
21190	0.552	0.585	4/0,6/1					0.121	15	RED	31	50	30
21191	0.552	0.585	4/0,6/1					0.121	15	RED	43	50	42
21200	0.586	0.606		266.8,19W				0.146	14	BLACK	31	50	40
21201	0.586	0.606		266.8,19W				0.146	14	BLACK	43	50	55
21210	0.607	0.63	266.8,18/1					0.146	14	WHITE	33	50	42
21211	0.607	0.63	266.8,18/1					0.146	14	WHITE	45	50	57
21220	0.631	0.655	266.8,26/7					0.146	14	YELLOW	33	50	42
21221	0.631	0.655	266.8,26/7					0.146	14	YELLOW	45	50	57
21230	0.656	0.679		336.4/19W				0.146	15	BROWN	35	50	48
21231	0.656	0.679		336.4/19W				0.146	15	BROWN	47	50	64
21240	0.68	0.703	300,26/7					0.146	15	BLUE	35	50	48
21241	0.68	0.703	300,26/7					0.146	15	BLUE	47	50	64
21250	0.704	0.74	336.4,26/7					0.146	16	GREEN	37	25	54

ALUMINUM LINE GUARDS

Catalog Number	Diameter Range (inches)		Conductor Construction A W G - M C M					Wire		Properties		Packaging per box	
	Min	Max	ACSR Type	All Aluminum Type	Aluminum Alloy Type	Compacted ACSR Type	Compacted All-Aluminum Type	Diam (inches)	Qty per set	Color " C "	Length (inches) " L "	Units	Weight (Lbs)
21251	0.704	0.74	336.4,26/7					0.146	16	GREEN	49	25	72
21260	0.741	0.792	397.5,18/1,26/7,24/7					0.146	17	ORANGE	39	25	60
21261	0.741	0.792	397.5,18/1,26/7,24/7					0.146	17	ORANGE	51	25	78
21270	0.793	0.814	477,18/1	477,19W,37W				0.146	18	PURPLE	39	25	64
21271	0.793	0.814	477,18/1	477,19W,37W				0.146	18	PURPLE	51	25	84
21280	0.841	0.898	477,24/7,26/7,30/7					0.146	19	BLUE	41	25	36
21281	0.841	0.898	477,24/7,26/7,30/7					0.146	19	BLUE	53	25	47
21290	0.899	0.954	556.5,24/7,26/7,30/7	477,19W,37W				0.167	18	GREEN	43	25	46
21291	0.899	0.954	556.5,24/7,26/7,30/7					0.167	18	GREEN	55	25	59
21300	0.955	0.986	605,26/7,636 24/7					0.182	17	WHITE	45	25	54
21301	0.955	0.986	605,26/7,636 24/7					0.182	17	WHITE	57	25	68
21310	0.987	1.016	636,26/7,666.6,24/7					0.182	18	YELLOW	45	25	58
21311	0.987	1.016	636,26/7,666.6,24/7					0.182	18	YELLOW	57	25	73
21320	1.017	1.064	715.5,26/7,24/7					0.182	18	BROWN	47	25	60
21321	1.017	1.064	715.5,26/7,24/7					0.182	18	BROWN	59	25	75
21330	1.065	1.098		874.5,37W,61W				0.204	17	GREEN	49	15	44
21331	1.065	1.098		874.5,37W,61W				0.204	17	GREEN	61	15	55
21340	1.099	1.153	795,26/7,30/19					0.25	15	ORANGE	49	15	58
21341	1.099	1.153	795,26/7,30/19					0.25	15	ORANGE	61	15	72
21350	1.154	1.208	954,45/7,54/7					0.25	15	PURPLE	51	15	62
21351	1.154	1.208	954,45/7,54/7					0.25	15	PURPLE	63	15	77

